

AVANI – CMS

CENTRALISED CONTROL & MONITORING SOFTWARE

General

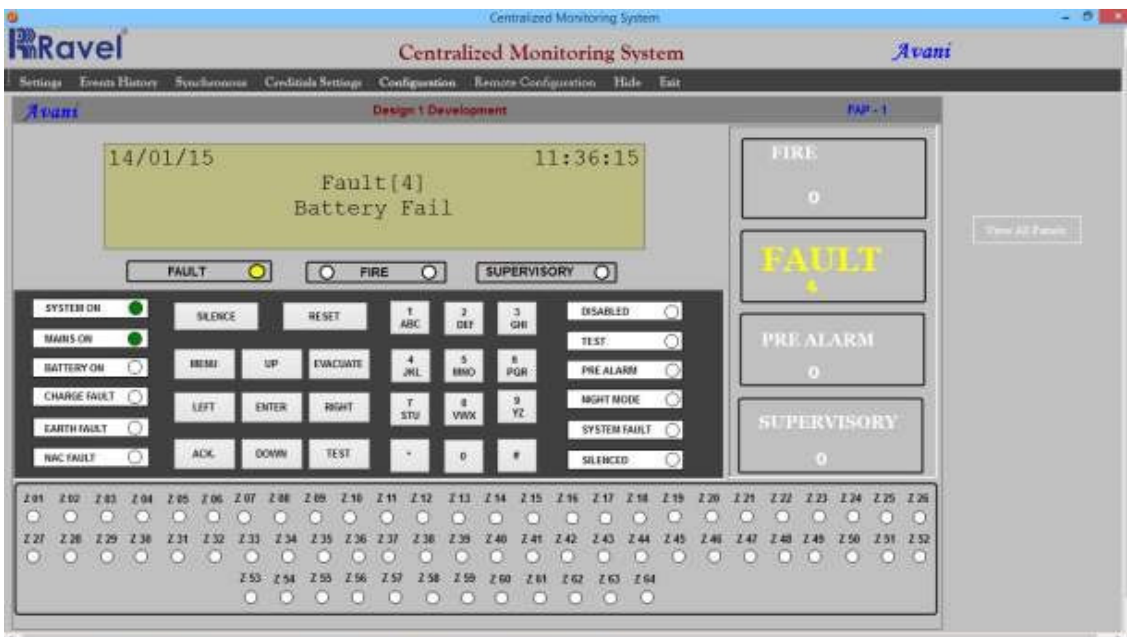
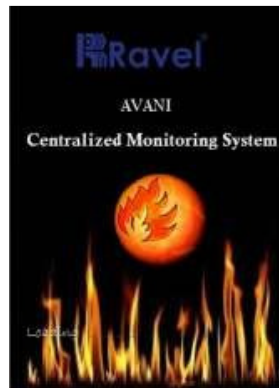
Centralized Control & Monitoring Software is a two level access controls for the security purpose (i.e. USER/ADMINISTRATOR). Event log list can be configured for panel /device wise with real time clock.visual & sound alerts for the Fire & fault conditions. Instant pop up's in case fire/fault status exists. Individual tones played for fault & fire indication. Device wise text to speech facility. Event based e-mail facility for the configured users.



Features

- Two level of access controls for the security purpose (i.e. USER / ADMINISTRATOR).
- Status regarding the number of panels are shown on a single screen with location and Fire / Fault count.
- Event Log list can be configured for panel / device wise with real time clock.
- Visual & sound alerts for the Fire & fault conditions. Instant Pop Up's in case fire/fault status exists.
- Individual tones played for Fault & Fire indication.
- Device wise text to speech facility.
- Event based E-mail facility for the configured users.
- Loop with device wise voice alert for the Fire condition (USER DEFINED).
- The Panel Status or Remote notification shall be shown in the same way as the main panel front fascia for easy access to a panel.
- Acknowledge/Silence the sounders connected in panel through AVANI CMS.
- Reset the Panel through AVANI CMS.
- Communication can be done through ethernet / USB.
- The IP List is intended to view / edit the IP addresses of the configured panel.
- The events log can be exported/printed from the CMS software.
- Upto 64 panels can able to monitor & control with respect to licence.

Screenshots



PC Specification

Recommended Operating Systems	Windows 8.1 (with update 2919355) & above ('Home' package variants can be used if network connectivity is not required)
Monitor	Minimum 17" and support a screen resolution 1024 X 768
Keyboard	Required
CD ROM Drive	Required for software installation (Optional)
Disk Space	40Gb Hard Drive (Minimum Recommended)
Backup Device	Backup device recommended (e.g. CDR, USB, ZIP disk)
USB Port	USB Port for communications with Graphics Interface. (Additional serial ports may be necessary if connectivity to other services are required)
Sound Card	Windows compatible sound card & speakers / On-board sounder required for event notification
Memory	4 GB RAM (Minimum Recommended)
LAN Connectivity	Dedicated to Fire Alarm System.
Processor	Intel Pentium 4 Processor, 1.8 GHz or higher
Options	<ul style="list-style-type: none">Any resolution above 1024 X 768 can be supported however, Graphical bitmaps must be created in the appropriate format for the resolution selected.If monitors are to be used in Portrait manner a horizontal screen resolution of at least 950 pixels must be available.
Pointing Device	Optical Mouse Required
Graphics	XGA Graphics Accelerator supporting a minimum 1024 X 768 resolution

Compatible Devices

Model	Description
AVANI	Analogue Addressable Fire alarm Control Panel expandable upto 4 loop

Ordering Information

Model	Description
Avani – CMS	Centralized Control & Monitoring Software

India

RAVEL ELECTRONICS PVT LTD.,
(An ISO 9001 Company)
150A, Electronics Industrial Estate, Perungudi,
Chennai – 96, India.
E-mail: marketing@ravelfire.com Web: www.ravelfire.com

United Kingdom

RAVEL ELECTRONICS LTD.,
Unit 11, Chancel Industrial Estate, Newhall street,
Willenhall WV13 1NX, West Midlands, United Kingdom.
E-mail: info@ravelfire.co.uk Web: www.ravelfire.co.uk

USA

RAVEL AMERICAS INC.,
2855 NW 112th Ave ST#2 Miami,
Doral, Florida 33172, USA.